



2025-2026 Catalog of Services



A Letter from the Agency Administrator

Every school year brings new challenges, and this year is no exception. With changes in technology, budgets, legislature, and communities, there's a lot to manage to support both your students and staff. Knowing where to focus your efforts and what steps to take next can sometimes be difficult.

During my time at CESA 2, I've been consistently impressed by the dedication and innovation I see in the districts we serve. How you help your students thrive is evident, and our staff is excited to continue partnering with you on this educational journey. We take great pride in seeing our area schools succeed, and we're honored to have been part of that success for over 60 years.



With that in mind, we continue to adapt our services to meet the evolving needs of education. This year, we've highlighted key services from each of our Centers of Excellence that we believe can be especially beneficial to your schools. These include support for implementing Act 20, comprehensive school mental health and wellness, our online teacher licensure program, CLASS, and many other offerings that address various aspects of the school system. Every service in this catalog is designed with your success in mind, but we are always happy to customize any service or package to best serve your school or district. CESA 2 is here for you and any circumstances that arise during the school year. We exist to provide resources and solutions that build the capacity of our diverse area schools, so please always feel welcome to reach out.

All my best,

Dan Hanrahan
Agency Administrator
dan.hanrahan@cesa2.org

Equity Statement

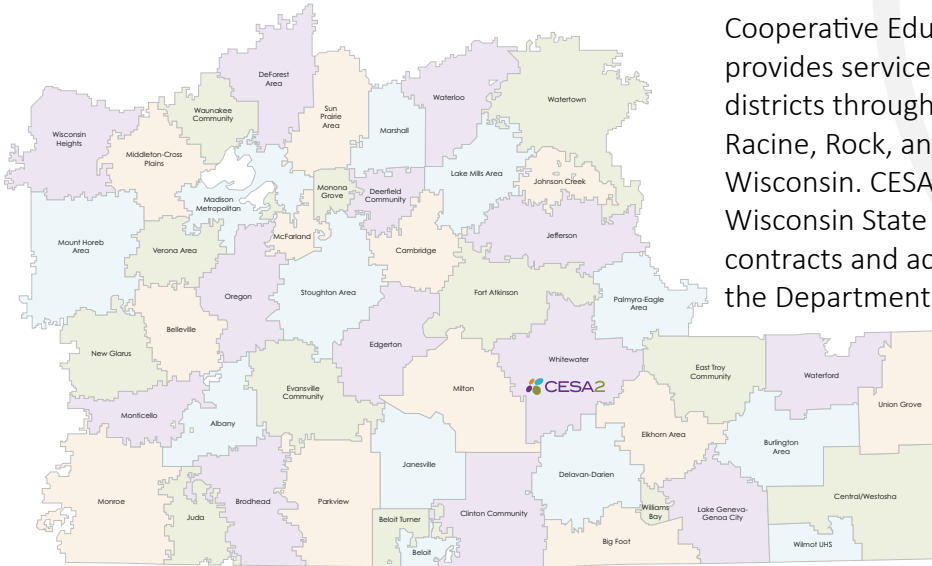
At CESA 2, we advocate for equity and work as allies in partnering with our districts and their stakeholders to improve student outcomes through collaboratively changing the educational system. We persist in the challenge of continually pushing ourselves, district leaders, school leaders, educators, and peers into conversations, reflections, learning, change, and actions that will make real the vision of all students succeeding.

We center student outcomes by holding firm to the goal of accelerating learning through culturally responsive education so that students engage deeply with our state's academic standards, while simultaneously experiencing learning for justice, and learning for joy.

CESA 2

Cooperative Educational Service Agency (CESA) 2 provides services and support to its 74 member school districts throughout Dane, Green, Jefferson, Kenosha, Racine, Rock, and Walworth counties in southern Wisconsin. CESA 2 is governed by section 116.01 of Wisconsin State Statutes, which allows it to enter into contracts and act as a liaison between school districts, the Department of Public Instruction and the U.S.

Department of Education. Funding for CESA 2 programs and services comes from state and federal grants, professional development workshop fees, and fees paid for specific services.



CESA 2's Goal for 2025-2026

CESA 2 is committed to utilizing continuous improvement to advance its strategic priorities. Our three overarching strategic priorities are:

- Establish the CESA 2 brand as a trusted organization of knowledge experts with deep expertise
- Ensure the agency is fiscally sustainable and growth-oriented
- Create and maintain raving fans

As a trusted organization of knowledge experts, CESA 2 invests in its staff to grow, enhance, and refine their skills and expertise. The agency works diligently to be good stewards of resources, continually streamlining internal operations, be market-competitive in our services, and expand our organization to meet the growing needs of those we serve.

CESA 2's services aim to create a lasting, positive impact through our quality content that you will love to engage with repeatedly and recommend to fellow educators. To ensure the agency provides worthwhile services and consultation, CESA 2 strives to be highly responsive and proactive with anticipating needs before challenges arise. From effective services to supplemental resources, this work focuses on creating and maintaining raving fans.

CESA 2's Mission

Improve student learning by expanding the capacity of our diverse school districts

Our Values

- Collaborative Relationships
- Effective Practice
- Family Engagement
- Tailored Services
- Shared Leadership
- Results Focus
- Innovative Thinking

Professional Advisory Committee (PAC)

CESA 2's Agency Administrator and its Board of Control are advised by the administrators of the 74 member school districts. The Professional Advisory Committee (PAC) meets monthly. All CESA 2 school district administrators are invited to attend the PAC meetings.

Education Foundation

The CESA 2 Education Foundation, Inc. is a nonprofit corporation formed to supply schools throughout the CESA 2 region with the services and support that they may not be able to individually afford, but their educators and students deserve.

The Foundation allows for private and corporate donations to assist in these program-worthy causes.

The Board of Control

The Board of Control is an 11-member board representing geographical clusters in CESA 2. Each member of the Board of Control is a member of his or her school board.

The Board of Control:

- Sets policies
- Authorizes expenditures of all funds
- Appoints an Agency Administrator
- Receives funding from districts paying for services, state categorical aid, and state and federal grants

Board Members (2024-2025)

Marian Viney, *Chairperson* - Belleville
Steve Brown, *Vice Chairperson* - Salem
Karl Dommershausen, *Treasurer* - Janesville
Eric Armstrong - Marshall
Bob Green - Middleton-Cross Plains
Lisa Huempfer - Whitewater
Kathy Klein - Edgerton
Tom Mooney - McFarland
Dennis Purtell - Waterford UHS
David Schroeder - Watertown

Services

The world of education is ever-changing. Our new and returning Centers of Excellence and our general and statewide services adapt every year to meet your needs. Our services work to help you and all the staff in your school and district utilize best practices, enhance your leadership and educational skills, and create raving fans in your district and beyond.

For almost all services, districts can contract for multiday packages of professional development and coaching through a service agreement. Packages may focus on one or a combination of improvement goals.

Need a service not listed in this catalog? Reach out to us at cesa2.org and let us know what you're looking for! We'll connect you with the appropriate CESA 2 contact, or look for a way to best provide the service you need.



Capacity Building Framework



AWARE

Introduction to a topic, new approach to current work, exploration of ideas for improving current practices or outcomes.



COMPREHEND

Recognize the importance and relevance of the practice, explain routines for initial application, and describe necessary infrastructure to get started.



PRACTICE

Try with support and “work to do it right,” initially cumbersome shift in practice, practice with reflection and feedback to build skill.



REFINE

Work to do it better. Apply appropriate strategy independently, adapt practice for unique circumstances, and develop expertise with coaching and feedback.



TEACH

Develop deep expertise and acquire sufficient knowledge, skill, and experience to support others' learning. Gain instructional leadership with support.

CESA 2's Capacity Building Framework is designed to ensure a well-matched, targeted, and efficient learning and implementation experience.

This framework can be applied to both individuals and systems. It is a part of all our professional development opportunities to guide you across all aspects of a particular topic.

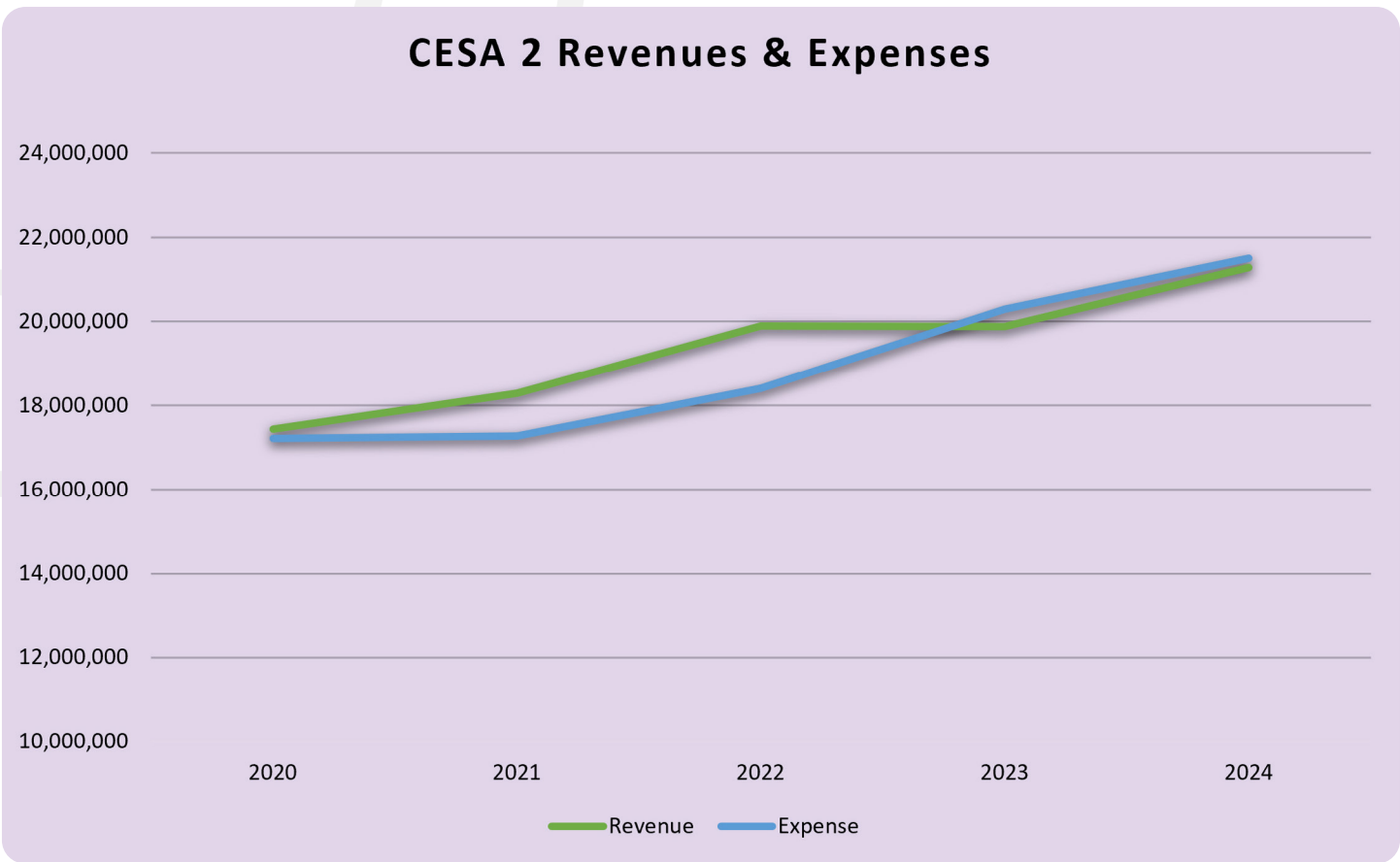
CESA 2 is available to help you along each step of the way! Our services are designed to address capacity-building efforts at each level represented in this Capacity Building Framework. When you work with our consultants, we will lead you through one or more of these frameworks to get to the point where you can lead and instruct others at your school or district on what you have learned.

74
school districts in the
CESA 2 region

32,279
school personnel in the
CESA 2 region

144,213
students in the CESA 2
region

CESA 2 Revenues & Expenses



CESA 2’s revenue goal is to sustain a slightly positive margin that allows us to continuously reinvest and expand our areas of expertise, all in an effort to support our member districts best. With the rapidly growing needs of our area schools, CESA 2 expanded to meet these necessities with additional consultants, itinerants, staff, and services. As new challenges and legislative changes arise, CESA 2 continues to be responsive to feedback and unique requests to meet the needs of all students and educational staff.

Centers of Excellence



Behavior & Mental Health

pages 8-10



Continuous Improvement & Data Analysis

pages 11-12



Curriculum & Coaching

pages 13-15



Language & Culture

pages 16-17



Licensing, Evaluation & Support

pages 20-22



Specialized Services & Staffing

pages 23-25



Strategic Innovation for Learning

pages 26-27



Systems for Inclusive Learning

pages 28-29



General & Statewide Services

pages 30-34

What's New

We've prepared a variety of new services to help you succeed this school year:

Act 20

Our team is prepared to offer multiple options to help implement Act 20, including coaching support, the Act 20 Leadership Institute, and a variety of workshops throughout the year.

Comprehensive School Mental Health and Wellness

With increasing concerns for student and staff mental health, we have crafted a comprehensive plan to address this area in all aspects of the school system.

Community, Career & Life Readiness (CCLR)

To prepare your students for life after school, CESA 2 offers a roadmap to help students expand their opportunities and skills throughout their childhood.

New Licensure Options

Consistently adding new licensure options like K-9 and Early Childhood Special Ed through CLASS, we now also offer courses to fulfill DPI Statutory Stipulations and LWS 3 pathways.

These are just a few of the new and updated services we have available! Reach out to us at cesa2.org to use any of these services or to describe your unique situation.



Behavior & Mental Health

Caring for Student and Staff Well-Being

Now, more than ever, schools need to be cognizant of and contribute to student and staff wellbeing. Through the Behavior & Mental Health Center of Excellence, schools receive the resources and tools, training, and coaching needed to support healthy behaviors for both students and staff and encourage positive social-emotional learning (SEL).

Featured Service: Comprehensive School Mental Health and Wellness

The foundation of a healthy school community is the Mental Wellness of staff and students. Mental Wellness is necessary to achieve the most fundamental purpose of schools- academic, social, and personal growth for all students. Mental Health and Wellness are not just the absence of Mental Illness, but rather having healthy brains that allows individuals, and communities, to thrive. Mental Wellness encompasses dispositions that can be learned and practiced; such as resilience, managing emotions, productivity, stress management, and the ability to connect and work with others. Engaging in efforts to increase School Mental Health consists of a thoughtful approach to different aspects of a school system. CESA 2 consultants are able to offer professional development to both individual staff members and/or facilitate adaptive systems change to create or improve their Comprehensive School Mental Health System through group training and in-district coaching. Additionally, they can support needs assessment and action planning, often utilizing the SHAPE assessment, to guide these efforts.

CPI Nonviolent Crisis Intervention (NVCi) Training

At this training, participants will receive certification in the Crisis Prevention Institute's (CPI) *Nonviolent Crisis Intervention (NVCi)* Training. This training focuses on the recognition that all behavior is a form of communication and provides participants with the tools to recognize/respond appropriately to support the student and deescalate the situation. Participants will be able to identify student's behavioral levels and will learn valuable approaches/strategies to respond appropriately for each of those levels. This training also includes the teaching of holding and disengagement skills as part of the safety interventions. At the conclusion of the training, participants will earn their CPI Blue Card Certification. Last year over 970 participants earned their Blue Card Certification through CESA 2 and both the Initial NVCi and the Refresher NVCi trainings are available in-district and at CESA 2.

970

participants trained in Nonviolent Crisis Intervention or Verbal Intervention this past year

CPI Verbal Intervention Training

The Crisis Prevention Institute's Verbal Intervention Training provides staff with an effective framework for preventing, de-escalating, and safely responding to crisis behavior. The program centers on the recognition that all behavior is a form of communication. Participants will gain a broad range of tools to help them manage their own emotional responses and identify escalating behaviors in others. This training does not include any holding and disengagement skills. At the conclusion of the training, participants will earn their CPI Verbal Intervention Blue Card. This training is available in-district and at CESA 2.

Educator Resilience, Wellness & Professional Self-Care

Through building awareness of Secondary Trauma, Compassion Fatigue, and understanding how to boost Compassion Resilience and Professional Self-care, CESA 2 can help school district staff

increase their professional stamina to best serve their students. CESA 2 consultants are able to offer professional development to both individual staff and specific staff groups seeking to boost their own resilience and to school systems desiring to support their staff's wellness.

Functional Behavioral Assessment (FBA) and Behavior Intervention Plans (BIPs)

Even when implementing a universal behavior support program to a high level of fidelity, some students will need additional support. CESA 2 consultants can train school staff in the use of Functional Behavioral Assessments (FBA) and design of Behavior Intervention Plans (BIPs). Ongoing coaching or review of FBA and/or BIPs is also available.



Pyramid Model

The Pyramid Model is created by the Center for the Social and Emotional Foundations for Early Learning (CSEFEL) and the Technical Assistance Center on Social Emotional Intervention for Youth Children (TACSEI). Based on the public health model, the Pyramid Model looks to guide educators, families, and other early childhood professionals, specifically for those involved with children up to five years old. The model promotes positive social, emotional, and behavioral outcomes for ALL students in the education system and gives plans to help children with or at risk for delays and disabilities in their early development. Through workshops and consulting, CESA 2 professionals will help implement the Pyramid Model in your school system.

Social Emotional Learning (SEL)

In order to help students become College and Career Ready, it is essential that they develop social and emotional skills. In addition to this being a worthy aspect of education on its own, research has shown students with strong social and emotional skills are able to perform better

academically and better engage in instruction. CESA 2 staff are able to support schools in their journey toward ensuring staff and students develop strong social and emotional skills.

Trauma Sensitive Schools (TSS)

Given the high exposure of Adverse Childhood Experiences (ACEs), Toxic Stress, and resulting Trauma, CESA 2 staff are trained to support our schools and school district staff in adopting philosophies and practices to become more Trauma Sensitive. By partnering with DPI and utilizing online learning modules, CESA 2 professionals are able to develop educators through knowledge building and coaching to individuals, leadership teams, and school systems. When adopting a Trauma Sensitive School approach, schools are acting to enhance students' educational outcomes by reducing barriers related to trauma. CESA 2 consultants also assist schools to ensure this lens is applied through the existing school framework (i.e., Equitable MLSS) and is additive to other school efforts, such as SEL, behavior programs, etc.





Continuous Improvement & Data Analysis

Integrating Systems for Maximum Effectiveness

The Continuous Improvement & Data Analysis Center of Excellence provides a variety of DPI approved grant-funded as well as district contracted services to benefit the experiences of learners. All these services come together to transform your schools on all levels and aspects of education.

Featured Service: Career, Community & Life Readiness (CCLR)

Transform your school or district into a launchpad for student success beyond graduation with CESA 2's CCLR educational system! By focusing on experiential learning, collaboration, and real-world connections, CCLR prepares students for life after school, equipping them with the skills they need for both career success and personal growth. This framework provides a meaning to each school day for your students, integrating your local and broader community throughout their education.

Our consultants will work with you to develop the roadmap and staff and community buy-in to create your unique CCLR education system. Our CCLR process centers on five key focus areas: Academic and Career Planning, Portrait of a Graduate, Equity & Access for CCLR, Metrics & Data- Telling Your Story, Portrait of a System

With our upcoming workshops and conferences, along with our ongoing The Future Is CCLR webcast series, take the time to learn more about our and your fellow districts' vision to "Teach Like It's 2045!"

Academic and Career Planning

Academic and Career Planning (ACP) is intended to equip our students and families with the tools necessary to make informed choices about postsecondary education and training as it leads to careers. CESA 2 provides ACP services to districts that are interested in building robust, integrated ACP programming. Services include networking meetings, ACP alignment, ACP planning support, ACP integration into content areas, XELLO Training and Support, and networking with area technical and 4-year colleges.

District Assessment Coordinator (DAC) Network

District Assessment Coordinators (DACs) have a myriad of responsibilities to ensure that their

district assessments run smoothly. The DAC Network provides an opportunity for DACs to share best practices, tools and insights. The DAC Network meets throughout the year and is a free network for CESA 2 member districts.

Implementation Science

At its core, Implementation Science builds the capacity of school and district teams to strengthen systems that support all students and their teachers. Through purposeful action and attention to Active Implementation Frameworks, CESA 2 is available to assist districts and schools to build a system that incorporates Equitable Multi-Level Systems of Supports (E-MLSS) with the use of effective implementation and research-based, evidence-informed practices.

Site-Specific Technical Assistance

District and school staff can contact CESA 2 for consultative support on a variety of issues. CESA 2 staff collaborate with external experts to meet your needs or make a referral to other individuals or agencies that will better support your particular need.

Systems Review Process

The conceptual framework of the systems assessment includes consensus building, infrastructure development, implementation routines, and sustainability actions. The procedures for the systems assessment include focus group interviews, surveys around practices and beliefs, site visits and walkthroughs, policy and procedure review, and data review. Districts will receive a comprehensive report with recommendations and a report back to leadership teams.

Systems support activities may be targeted to broadly improve district or building-level system structures and routines that support high-quality continuous improvement practices.

More focused program-specific review activities are also offered. Examples of program focus include Language Arts, Mathematics, Science, Social Studies, early childhood/preschool programs, and Special Education.

Systems Support and Data Analysis

This analysis works to provide quality support services to school districts for building strong organizational system structures and routines that are consistent with “Best-Practices” research. CESA 2 will give professional development and coaching support to school districts for learning and deploying continuous system improvement routines that guide decision-making.

Technical Assistance Network

The Technical Assistance (TA) Network provides continuous improvement assistance to advance educational equity. Our network meetings include extensive individualized support based presentations and conversations by experts to implement evidence-based improvement strategies in your school and district. The network covers a variety of topics such as equitable multi-level systems of supports, special education, Title I, Educator Effectiveness, data, and coaching.

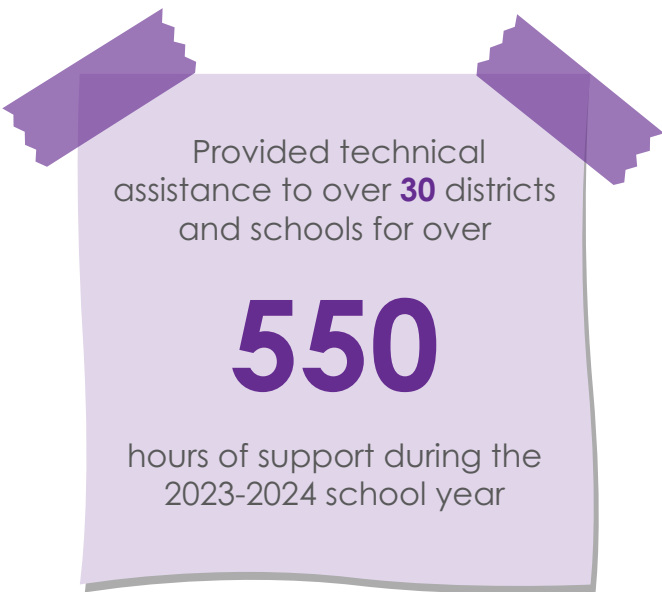
Wisconsin School Report Card Interpretation

The Wisconsin School Report Cards represent a public facing accountability report that communicates information about district and school performance as compared to benchmarks established by the WI Department of Public Instruction. The Wisconsin School Report Card was revised substantially in 2021. CESA 2 offers workshops and customized technical assistance for district and school staff interested in understanding the data on the School Report Cards. Most importantly, these supports build capacity for how to use these data to evaluate system impacts and for developing system improvement strategies that lead to equitable outcomes across all student achievement domains, and social-emotional development levels.

WISEdash/WISExplore

CESA 2 staff provide districts with support around understanding and using WISEdash and WISExplore. The support focuses on helping educators to perform comprehensive data inquiry to assist with school improvement planning and implementation.

Educators are supported in the use of state and local data systems and tools, as well as how to research and implement data-informed practices. Trainings focus on helping participants understand Report Card scores and their interpretation, navigation of WISEdash features, the key data types available in WISEdash, investigation of basic data questions using WISEdash, and documenting data inquiry.



Provided technical assistance to over **30** districts and schools for over

550

hours of support during the 2023-2024 school year



Curriculum & Coaching

Building Up Both Students and Staff

Ongoing, job embedded professional learning has been shown to be the most effective way to increase the impact of instruction. CESA 2 Curriculum & Coaching Center of Excellence consultants support the implementation of the newly updated Wisconsin State Standards and Key Shifts, curriculum review process, and support implementation of high-quality standards-aligned instructional materials in all content areas. Set goals that benefit all of your students' learning and future!

Featured Service: Act 20 Coaching and Support

Act 20 Leadership Institute

The Act 20 Leadership Institute is intentionally designed for district and school leaders aiming to boost early literacy outcomes by embedding science-based reading instruction. This comprehensive workshop emphasizes cultivating a deep comprehension of reading science, structured literacy, and the practical nuances of Act 20 mandates within educational settings. A prerequisite for participation is completion of one of the approved Act 20 literacy trainings, such as Cox Campus, LETRS, or Keys to Beginning Reading. The program is structured to foster collaborative learning, enabling participants to formulate strategic literacy implementation plans congruent with both current research and legislative stipulations.

In-District Coaching Support for Implementing Act 20

This structured approach provides a CESA 2 literacy consultant for in-district coaching support to teachers following their initial training on Act 20. The focus is on embedding the key components of systematic and explicit instruction as outlined in Act 20 into daily teaching practices. The coaching will address phonological awareness, phonemic awareness, phonics, building background knowledge, oral language development, vocabulary building, instruction in writing, comprehension, and reading fluency.

Science-Based Reading Instruction Training and Supports

At CESA 2 we have consultants who are certified trainers in both LETRS® (Language Essentials for Teachers of Reading and Spelling) and Keys to Beginning Reading. Contact us today for more information on our flexible offerings both virtual and in person. We can develop a plan that fits your district's professional development needs.

Simply completing a certified science based reading training may not be enough to ensure that educators are implementing strategies that meet the needs of every student in their classroom. CESA 2 consultants provide coaching to support the implementation of high leverage early literacy.

Early Learning Services, Standards, and Implementation

CESA 2 believes that education begins well before Kindergarten. Our Early Childhood Consultants are child development leaders. They can provide tailored services to meet the needs of your district, including:

- Instructional coaching in early literacy, math and social emotional competencies
- Early learning curriculum and developmentally appropriate practices
- 4K-5K curriculum alignment
- Support for High Quality Inclusionary Practices
- Pyramid Model coaching and support

All with an emphasis on the whole child, developmentally appropriate practices and evidence based strategies.

English Language Arts/Literacy Services, Standards, and Implementation

CESA 2 offers Reading Specialist (317) licensed PK-12 literacy consultants with extensive knowledge of culturally responsive practices who utilize

implementation science to support review and development or selection of instructional materials and support implementation of high-quality English Language Arts (ELA) curriculum. Reading Specialists also consult and coach district leaders around compliance with state statutes, and development of equitable multi-level systems of support. They can serve as the district's in-house reading specialist, if needed. We are also available to support initial learning and implementation related to the updated ELA Standards, including shifts around identity, language, foundational skills, and disciplinary literacy. On-site, as well as synchronous and asynchronous options, for standards-aligned curriculum development, facilitation, and coaching for effective system-wide and classroom level implementation are available.

Foundational Reading Skills System Review

CESA 2 offers a district or school-level evidence aligned early literacy review process. Connected to the Wisconsin ELA Standards (2020), the Wisconsin



Dyslexia Guide and Wisconsin Act 20, consultants provide a paper review of intended curriculum, gather staff survey data, and collect walk-through data to confirm implementation. These sources of data inform a needs assessment, theory of action, and continuous improvement planning process generating literacy goals moving forward. Lift the level of consistency and equity of instruction! Do a system review today!

Mathematics Services, Standards, and Implementation

CESA 2 consultants support the implementation of the newly updated Wisconsin State Standards (2021) for Mathematics in grades 4K-12 including the new key shifts around agency, identity, and flexibility. We have specialized training in Early Childhood Mathematics around developmentally appropriate and personalized instructional moves connected to how young children think and learn about mathematics. On-site or virtual mathematics workshops are provided for educators across all grade levels. Instructional coaching is available either in conjunction with or separate from other professional learning options.

CESA 2 offers professional learning opportunities and coaching on the implementation of HQIMs year round that help educators, coaches, and administrators successfully implement mathematics curriculum and create an engaging mathematics classroom. We also provide coaching and consulting services around course sequencing, standards based grading in mathematics, data collection, and detracking for secondary mathematics.

Professional Networks

Curriculum & Coaching Consultants offer year-long memberships designed to connect professionals from across districts to network, share resources, and deepen learning around hot topics and new trends in the field. These virtual gatherings last one to two hours and include both information sharing and collegial discourse. Check the CESA 2 professional development website to register for one of the following:

- Literacy Coaching Network
- Mathematics Coaching Network
- Library Media Specialist Network
- Early Childhood Educators Network

Science Services, Standards and Implementation

CESA 2 consultants have designed a process for districtwide (K-12) Science curriculum review, gap analysis, vertical alignment, and development or review of published curricular materials aligned to the Wisconsin Science Standards and the Next Generation Science Standards (NGSS) with a focus on embedding phenomena and inquiry. Instructional coaching to support implementation of updated curriculum is also available as part of an effective district roll-out plan. We also offer support for standards-based grading.

Social Studies Services, Standards and Implementation

CESA 2 consultants have designed a process for districtwide (K-12) Social Studies curriculum review, gap analysis, vertical alignment, and development of curricular units aligned to the updated Wisconsin Social Studies Standards. Unit development centers inquiry, and incorporates multiple perspectives, Universal Design for Learning, Backwards Design principles and implementation of Act 30 and Civics requirements. Instructional coaching to support implementation of updated curriculum is also available as part of an effective district roll-out plan.





Language & Culture

Enhancing Multilingual Learner Education

The Language & Culture Center (LCC) builds district capacity to address the academic, language, literacy, and cultural needs of English Learners or Multilingual Learners (ELs/MLs). Our services help educators create inclusive environments that benefit all students, going beyond compliance to foster meaningful growth.

L³IFT Framework: An Innovative Effective Approach to Teaching Multilingual Learners

The Learning, Language, and Literacy Integrated Framework for Teaching (L³IFT) is a pioneering framework developed by the Language and Culture Center to meet the needs of multilingual learners and traditionally marginalized students. Rooted in cutting-edge research, L³IFT represents a new way to approach language, literacy, and content integration in the classroom.

What Makes L³IFT Innovative?

- Culturally and Linguistically Sustaining Practices: L³IFT emphasizes teaching that validates and integrates students' diverse cultural and linguistic backgrounds, fostering engagement and identity affirmation.
- Disciplinary Literacy and Language Integration: The framework bridges literacy and language learning with subject matter instruction, ensuring that multilingual learners learn language not as a prerequisite to but in tandem with content.
- A Functional Perspective on Language: L³IFT teaches language as a tool for making meaning in specific contexts, moving beyond traditional grammar instruction to focus on real-world applications.

Start transforming your classrooms with a framework designed for multilingual learner success.

EL Coordinator Services: Meeting Requirements with Excellence

Our EL Coordinator Services help districts meet state and federal mandates while strengthening instructional strategies. Services include:

- ACCESS for ELLs and bilingual language assessment administration.
- Student tutoring and support.
- EL program coordinating services and Individual Learning Plan implementation.
- Language Instruction Education Program plan development.

Let us provide the support you need to meet legal and instructional goals.

EL Networks: Learning Through Collaboration

Our Core and Satellite Networks provide professional development and collaboration opportunities, including:

- Quarterly core network sessions for educators.
- Specialized satellite sessions that meet throughout the year that focus on topics like family partnerships and newcomer support.
- Access to resources and expert consulting.

Join a network that fosters collaboration and improves outcomes for multilingual learners.



Welcome to the ML Summit!

Time	Activity
8:00-9:00	Breakfast (provided), check-in, and connect Orientation and Logistics
9:00-9:20	Welcoming Message from Mandal Senoh-Mastadi & Dr. Rusland Westerlund

- Grab your folder and a name tag and find a table.
- Chat with the people at the table. What are your hopes for today?

Professional Learning: Tailored to Your District

We deliver workshops and ongoing training on topics such as:

- Translanguaging and culturally responsive teaching practices.
- Coteaching and program design (Dual Language program, ELD integration, etc).
- Data analysis: ACCESS growth data, proficiency levels, etc.
- WIDA ELD standards and assessment strategies.
- Multilingual literacy practices.
- Technology to support MLs.

Empower your educators with learning opportunities customized to your district's needs.

Program Review and Design: Customized Solutions

Districts have a responsibility to provide effective programs for multilingual learners. We provide

specialized support in crafting and evaluating effective programs for multilingual learners.

- Comprehensive needs assessments and data analysis.
- Strategic plans for multilingual and bilingual programs.
- Curriculum crosswalk.
- Program analysis.

Partner with us to create programs that inspire and succeed.

Making an Impact

The LCC has implemented elements of the L³IFT Framework in more than 70 school districts across the region and the state. Connect with the LCC team today to learn more about how we can support your district. Together, we can enhance education for multilingual learners and create thriving, inclusive learning environments for all students.

CESA purchasing

Use Our Procurement Support Services and Pre-Negotiated Contracts to Save Time and Money!

Purchase everything you need for your school, including athletic equipment, digital software, facilities supplies, and so much more! CESA Purchasing works with over a hundred vendors to meet your needs. Many of our contracts have undergone a full RFP process to be awarded, potentially allowing you to avoid this painstaking and time consuming task on your end. Using our contracts and procurement support services is FREE for all Wisconsin schools and educational entities, no membership or formal sign up required.

CESA Purchasing has been expanding its services to further meet your needs. In addition to our blog, which covers a wide range of purchasing topics, we've developed services to help you avoid hurdles and challenges throughout the purchasing process as well as implementing improvements to make using our contracts easier than ever.

Our Services include:



Source a Quote - Let us source quotes for your purchasing needs. Just fill out the brief form on our website and we'll do the rest!



Procurement Assistance- Need help with planning, analysis, and management of a particular project? We can help you through the process!



Access Our Vendor Network - Might you need recommendations from experts in the field before making a purchase? Use our extensive network of vendor partners!



Vendor Audit - Are you getting the discounts you should be receiving? Let us double-check your agreements with vendor partners to ensure you're saving time and money!

CESA Purchasing is not a third-party purchaser or distributor. We assist with securing quotes for Wisconsin educational entity purchasers. Once quotes are provided to the purchaser, it is their responsibility to complete the purchasing process with the preferred vendor.



Sourcing Quotes Just Got Easier!



Understanding the challenges and time constraints you face in school procurement, we have developed this service to streamline your purchasing process. Sourcing quotes through CESA Purchasing connects you directly with hundreds of reliable vendors, ensuring you receive competitive quotes that meet your specific needs. We'd like to invite you to take advantage of this service and experience the difference it can make in your procurement activities. Submitting a request is easy – simply visit cesapurchasing.org/source and complete the form. For any questions or additional information, don't hesitate to get in touch with Meghan Cropp at meghan.cropp@cesapurchasing.org.



Why source quotes through CESA Purchasing?

- Time-Saving: Let us do the heavy lifting of sourcing quotes.
- Cost-Effective: Access to a wide range of vendors ensures competitive pricing.
- Tailored for Schools: Products and services specifically suited for educational environments.



Licensing, Evaluation & Support

Individualizing the Induction and Licensing Experience

The Licensing, Evaluation & Support Center personalizes the induction and licensing journey for educators, ensuring a supportive pathway to success. Whether launching your teaching career, adding a new licensure area, or enhancing district-wide mentoring or educator effectiveness, our comprehensive services are designed to meet your unique needs.

CESA 2 Education Career Fair

The CESA 2 Education Career Fair creates a space for CESA 2 districts to relay their open teaching positions with hundreds of graduates or soon-to-be graduates from teacher preparation programs in Wisconsin and out-of-state Universities and Colleges. When your school or district joins us at the career fair, you get to see the most engaged and proactive candidates coming out of our schools of education. Meet the next generation of educators each year in the spring!



Educator Effectiveness/Effectiveness Project

CESA 2 provides support for both the DPI model (based on the work of Charlotte Danielson) and for the CESA 6 Effectiveness Project (an approved equivalent model based on the work of James Stronge). This service includes professional development, consultation, and customized support for districts as they implement either model. We also offer in-district Educator Effectiveness evaluations with licensed administrators.

New Teacher Center Mentor Training/Teacher Induction

CESA 2 is proud to partner with the New Teacher Center (NTC), a national non-profit organization dedicated to improving student learning by guiding a new generation of educators.

Our goal is to help CESA 2 districts establish an Induction Program with a cadre of high-quality, well-prepared mentors to work with new teachers through rigorous and engaging training. The New Teacher Center is research-based and nationally recognized. Based on NTC resources, training, and research, CESA 2 helps districts create a mentor program that is shown to enhance student learning by as much as 2-5 months in a school year, accelerate teacher practices, and increase teacher recruitment and retention rates.

The WI Department of Public Instruction requires districts to provide mentor training and three years of mentoring for teachers new to the profession. The CESA 2 NTC Mentor program meets the state requirements and offers the high-quality professional development and support your mentors need and your new teachers deserve! The state also offers the Peer Review Mentor Grant that helps support the cost of mentor training. CESA 2 facilitates grant writing support at no additional charge.

(Continued on page 22)

Featured Service: CLASS: Your Flexible Pathway to Wisconsin Teacher Licensure!

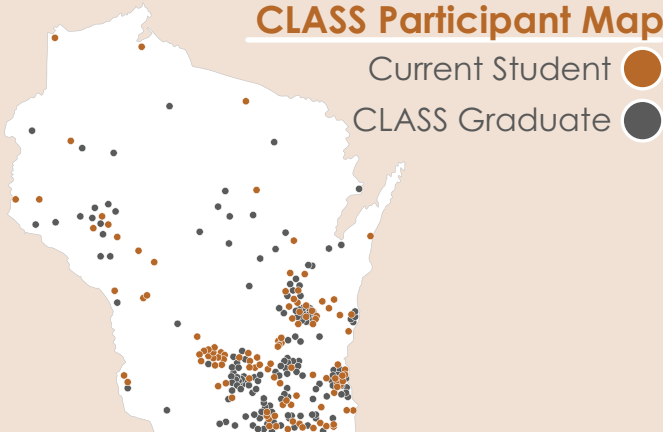
The CESA 2 Licensure Academy for School Staff (CLASS) program offers Wisconsin DPI-approved, flexible pathways to teacher licensure. Designed for working professionals, CLASS combines online coursework with live, personalized coaching sessions via Zoom, ensuring you receive timely support from experienced licensed faculty in your specific content area. With opportunities to collaborate and network with faculty in each licensure area, CLASS empowers educators to achieve their goals with the flexibility and expertise needed to succeed.

CLASS currently features the following for initial and add-on teaching licensure programs:

- 4K-12 ESL
- 3K-12 Special Ed Cross Categorical with FORT Alternative Portfolio Option
- 4K-12 Spanish
- 4K-12 PE with Health Add On Licensure Support after PE license is earned
- Grades K-9 Elementary and Middle Level Education includes FORT exam course and Coaching
- Grades 4-12 Math
- Grades 4-12 Science
- Early Childhood Elementary (Birth to Grade 3) includes FORT exam course and coaching
- Early Childhood Special Education (Birth to Grade 3) with FORT Alternative Portfolio Option
- Bilingual Supplemental
- Driver Education

More licensure areas coming soon! Watch for our Adaptive Physical Education and Deaf & Hearing of Hearing licenses available upon DPI program approval.

CLASS Participant Map



99%
FORT Exam first attempt pass rate for out CLASS candidates

99%
CLASS graduation rate within 3 years

Statutory Requirements Courses

CLASS offers the following stand-alone Wisconsin State Statutory Stipulations courses for teachers needed to meet statutory requirements:

- Act 31- Wisconsin Native Nations (part of Minority Group Relations)
- Equity (part of Minority Group Relations)
- Environmental Education
- Conflict Resolution
- Special Education
- Act 20- Reading Language Arts

Three-Year License with Stipulations (LWS3) support and approval.

The Licensing, Evaluation, and Support Center provides support and portfolio approval for teachers obtaining their license through the 3-year license with stipulations district-sponsored pathway portfolio in the following licensure areas:

- K-9
- Early Childhood (Birth to Grade 3)
- Early Childhood Special Education (Birth to Grade 3)
- ESL (K-12)
- Bilingual Supplemental
- Math (4-12)
- Phy. Ed. (K-12)
- Science (4-12)
- Spanish (K-12)
- Special Ed Cross Categorical (K-12)

The CESA 2 New Teacher Center Mentor program is a 2-year certification program delivered in person and virtually (synchronous/asynchronous) with flexibility for educators during the summer, during the school day or after school sessions.

If a district would prefer its own in-district sessions, we customize training to be flexible to accommodate schedules and virtual/in-person facilitation.

Paraeducator Training

CESA 2's Paraeducator training is an asynchronous 6-8 hour training ideal for the new Paraeducator or those who might appreciate a refresher in terms of roles and responsibilities. There are currently two trainings available:

Option 1: General Paraeducator Training

The training includes:

- **Roles and Responsibilities:** What is the role of the teacher? What is the role of the Paraeducator?
- **Confidentiality:** What are the considerations for confidentiality?
- **Communication:** What are the critical elements of communication?
- **Behavior:** What are the critical elements of behavior management?
- **Students with Special Needs:** What is important to know?
- **English Learners:** Strategies and supports
- **Technology Tools:** Use and purpose

Option 2: EL/Bilingual Paraeducator Training

This new asynchronous course aims to provide EL and bilingual paraeducators with specific tools to support learner agency and advocacy within the schools and communities that they serve. This course is designed specifically for EL and bilingual paraeducators and builds awareness of many factors influencing English Learner education in the United States.

Substitute Teacher Database

Districts can reach out to CESA 2 at any time for a list of available substitute teachers. With the substitute shortage in schools, CESA 2 can provide contact information for hundreds of potential substitute teachers. Visit our website to access the Substitute Database and reach out to the hundreds who go through our program.

Substitute Teacher Licensure

CESA 2 offers Wisconsin DPI-approved training for those who want to obtain a Three-Year Short-Term Substitute License. A Short-Term Substitute License allows individuals to be substitute teachers in Wisconsin's public schools. With this training, anyone with an Associate's Degree or higher from an US accredited school can be a substitute teacher. Over 2000 participants since 2018 have become certified through our substitute program.

Through this class, participants gain a deeper understanding of the following:

- The culture of schools and the teaching profession
- Health and safety issues, including handling of medical emergencies
- Age-appropriate teaching strategies
- Discipline, conflict resolution, and classroom management techniques
- Techniques for starting a class
- Working with lesson plans
- Working with children with disabilities, including confidentiality issues

New Teacher Center

32

Districts Served

128+

Mentors trained and supported



Specialized Services & Staffing

Fulfilling Needs for Each and Every Student

The Specialized Services & Staffing supports district capacity to address the academic, social emotional and behavioral needs of all students, with a focus on our students needing Special Education Services. Our services help educators create inclusive environments that support students in reaching their learning goals. Specialized Services & Staffing provides a variety of DPI approved grant-funded as well as district contracted services and staffing to benefit the experiences of all learners.

Featured Service: Itinerant Staffing

CESA 2 is able to contract with districts in need of itinerant staff that are either of low incidence in the district, or in order to cover for a staff member on leave. Specialized Services & Staffing will provide services written in IEPs or 504 plans to students, attend IEP/504 team meetings, evaluate students for need, and complete all IEP/504 paperwork for the students within the district system. Staff are certified by DPI to provide the services they are contracted for. Included in the service is the expertise of a licensed Pupil Services Director to work with your Pupil Services Director regarding the services.

Itinerant Services available for contracting:

- Audiology
- Augmentative Alternative Communication (AAC)
- Teachers for the Blind or Visually Impaired
- Teachers for the Deaf or Hard of Hearing
- Physical Therapy
- Occupational Therapy
- Orientation and Mobility Specialist
- Speech/Language Therapy
- School Psychology

Assistive Technology Network

The Assistive Technology (AT) Network provides districts with the opportunity for ongoing collaboration, support, legal updates, tools and resources in the area of assistive technology for students with IEPs. The quarterly AT Network meetings include presentations from experts in the AT field, best practice learning opportunities, and development of district resources.

Co-Teaching Services and Implementation

Co-Teaching is generally defined as two licensed educators, often a special education teacher, reading specialist, or EL specialist and a general education teacher, sharing equal responsibility for planning, delivering, and evaluating instruction, and learning to meet the diverse needs of students in a shared space. One goal of this inclusive instructional model is to increase the likelihood of equitable student outcomes by capitalizing on

the expertise of both educators. It also allows for more personalized instruction to occur within the classroom. Both professional learning sessions and coaching are available.

RSN-Regional Special Education Network

The Wisconsin Regional Special Education Network (RSN) is offered in cooperation with DPI as a free support to all area directors of special education. The mission of the Wisconsin RSN is to improve the quality of educational services to students with disabilities. The RSN has identified the strategies of communication, staff development, and leadership for accomplishing this mission. The RSN also provides technical assistance to local special education leaders via phone calls, district visits, information dissemination, and discussions at CESA 2 RSN meetings.

Special Education Consultation

The Special Education team provides consulting services to strengthen the capacity of school districts to meet the diverse needs of individual students with their special education and regular education programming. Consulting services can include but are not limited to: working with specific teachers or personnel, consulting on specific student issues, training on IEP writing and compliance, and more.

Transition Advisory Network (TAN)

The Transition Advisory Network (TAN) provides ongoing collaboration, support, and learning opportunities to districts/staff around transition. Members have the opportunity to network with other districts and build a learning community around improving postsecondary outcomes for students with IEPs. The TAN membership also includes access to custom district transition resources and participation in the Job Olympics student event.

Transition Services

The CESA 2 Transition Specialist offers consultative

services to school districts in the following areas:

- assessment of current transition practices
- development of a K-12+ transition framework
- transition-focused IEP writing
- postsecondary transition plans
- Beyond 18+ services
- creation of transition resources for students, families, and staff.

Wisconsin Accessible Education Materials (AEM) Center

The Wisconsin Accessible Educational Materials (AEM) Center is a point-of-contact for educators to seek support in acquiring materials for students with IEPs. The acquisition of Accessible Educational Materials (AEM) for students with IEPs means that students have materials in a timely manner (as to when non-disabled peers receive materials), and in accessible formats that address their disability-related need(s).



Wisconsin Transition Improvement Grant

The Transition Improvement Grant (TIG) combines two long-standing discretionary grants: The Wisconsin Statewide Transition Initiative (WSTI) and the Wisconsin Post High School Outcomes Survey (WPHSOS) into one dynamic, statewide IDEA discretionary grant.

TIG is intended to provide effective, targeted, and low-cost professional development to Wisconsin youth, parents, educators, and all stakeholders in the area of postsecondary transition to improve strategies that will positively affect the post school outcomes of students with disabilities.

This grant is designed to strengthen and accelerate the transition process in our Wisconsin schools to improve the quality of post-secondary transition plans, increase high school graduation rates,



encourage outside agency connections and develop strong career and college readiness among our students with disabilities.

WSPEI: Parent - Educator Network

WSPEI is all about partnerships and helping families and school districts find resources that help them build positive working relationships, leading to shared decision-making and positive outcomes for children's learning. Services are available for both families and schools and are free of charge.



**Itinerant Services in
2024-2025**

70
Districts were provided with
Itinerant Services

**61 Districts
& 9 Schools**
supported by Itinerant Staff



Strategic Innovation for Learning

Transforming Learning by Leveraging Innovative Tools and Strategies

The Strategic Innovation for Learning Center of Excellence offers opportunities for educators, coaches, and leaders to embrace innovative practices including system change, modern classroom practices, educational technology, and library services that meet the needs of today's learners and prepares them for future success and readiness.

Featured Service: District Leadership Planning for Successful AI Implementation

CESA 2 offers innovative and pertinent AI support for our regional districts. We advise and support with leadership and cross-functional teams to customize national and state AI frameworks to meet each district's unique needs. From HR to Teaching and Learning, we help integrate AI solutions that boost efficiency and educator effectiveness—benefiting everyone from the superintendent to elementary students.

Collaborative Learning Networks

In our networks, leaders and educators collaborate with other districts to learn, share, and grow. DPI often joins with state updates, pertinent information, and sharing of statewide systems.

- **Technology Leader Network:** Collaborate on topics such as cybersecurity, networking, best pricing and vendors, and more.
- **Library Media Network:** Collaborate on topics such as Future Ready library planning, common school funds and purchasing, ISTE/WI standard implementation, and more.
- **MakerSpace Cohort:** District teams gather monthly to discuss projects and strategies to enhance their STEAM programs and design thinking curricula.

75%

of our districts with library services attend our Library Media Network

Equity and Technology

Utilize our services to integrate technology to provide equitable access, engagement, and impact in your classroom:

- **Centering Culturally Responsive Pedagogy in Digital Learning:** Engage in a foundational overview of requisite beliefs and explore how culturally responsive beliefs and instructional moves can be leveraged through digital design.
- **Tech Audit for Equity:** Explore which questions you need to ask and answer about digital tools and online curricula to help ALL students succeed.
- **Using Digital Tools and Resources to Support the New Key Shifts: Lifting Up Identity, Flexible Use of Language, and Multimodal Texts:** Find out more about these key shifts, consider some examples, and learn how to leverage digital tools and resources to design liberating learning experiences for students!

Integration of WI Standards

The CESA 2 Strategic Innovation for Learning Team can help your school meet key standards. This includes the WI Information and Technology Literacy Standards and Computer Science Standards which can be integrated across content area standards.

Leading with Innovation and Design

The CESA 2 Strategic Innovation for Learning Team can assist schools to implement systems, designs, and audits. This includes:

- **AI System Implementation:** Our team will lead the process of designing a district framework that encompasses any or all of the following - policy, ethical usage/academic integrity, privacy and security, educational pedagogy, productivity, and efficiency.
- **Educational Technology Integration, Program Evaluation and Design:** CESA 2 consultants will help lead purposeful device implementation that supports all learners. We can evaluate how devices are being leveraged, including instructional pedagogy, classroom environments and management while identifying strengths and opportunities for growth with digital implementation.
- **Blended Learning Implementation:** Our team will support the design of a classroom that leverages the blended learning models. These models incorporate pedagogy to drive intentional use of digital devices and strategies.
- **Learner-Centered Practices:** Our center will support the creation of educational environments where learner agency is fostered. Methods to support strategic and intentional learning that is relevant for each learner is the focus of shifting pedagogy. Micro-credentials and online learning is available.

Library Services

The CESA 2 Strategic Innovation for Learning team can provide Library Media Services for your staff. Support new(er) staff leading a library program to build knowledge and skills in such areas as collections management, digital cataloging, budgets, and ordering, as well as portfolio artifact support.

Need Library Media Specialist (LMS) services? Our CESA 2 licensed LMS can:

- purchase using Common School Funds
- maintain and update records in digital catalog (e.g., Destiny)
- curate a 24/7 Library Media Center presence or resource lists, etc.

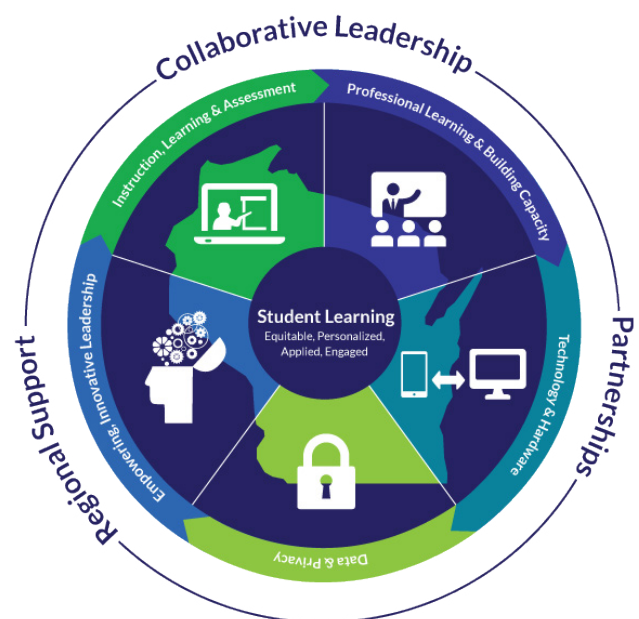
Purchase LMS services per project or as a set number of contract days.

STEAM/MakerSpace Services

We can help you connect the use of digital tools and resources to curricular content and standards such as Design Thinking, STEAM, Cybersecurity, Digital Citizenship, and MakerSpaces, Standards work, and assessment practices. Engage with our consulting and workshops to learn how to integrate these emerging standards into your classroom.

WI Digital Learning Framework (Technology Plan)

The Strategic Innovation for Learning Team is equipped with structures and strategies to support district leaders to implement digital learning based on the WI Digital Learning Framework. In alignment with the WI Digital Learning Framework, the Future Ready Schools Framework provides districts access to a digital dashboard, project management, stakeholder surveys, and district outcomes all focused around the learner.





Systems for Inclusive Learning

Helping Every Student to Thrive and Succeed

When circumstances can change in a moment's notice, you need the preparation and knowledge to respond and plan. The Systems for Inclusive Learning Center of Excellence team can analyze data, review systems, and develop practical strategic plans that guide your decision-making and create a quality education for every student.

Featured Service: Culturally Responsive Practices

Guided by DPI's Model to Inform Culturally Responsive Practices (CRP) and the work of various CRP scholars of color, CESA 2 Systems for Inclusive Learning Consultants are available to support educators in exploration of the CRP tenets of relational trust, cultural competence, equitable access to high level learning, recognizing and honoring students' identities, fostering criticality through multiple perspectives, and agency to create change. Working to embrace these asset-based approaches in conjunction with examining and disrupting implicit bias and inequitable systems is a journey upon which CESA 2 consultants would be honored to partner with educators. Ongoing onsite coaching inspires long-term shifts in practice that positively impact school culture and practices.

Practical Collaborative Learning Systems

Practical Collaborative Learning Systems (PCLS) is a framework to cultivate partnerships that leverage practices that are learner-focused, intentional, and responsive to ensure a thriving inclusive culture for all learners. This framework is designed to help districts:

- Make meaning of their current state to make systemic changes to desired state.
- Create increased agency and confidence in their systems change leadership.
- Deepen their understandings about an element (framework, concepts, models) and implement a more inclusive system for all students with sustainable practices and policies.
- Learn and embody the mindsets to disrupt inequalities in their system.
- Become adept at noticing and reflecting in a collaborative structure.

Equitable Multi-Level System of Support (E-MLSS)

Equitable Multi-Level System of Support (E-MLSS) is a process for achieving higher levels of academic and behavioral success for all students. It is an overarching framework and logic for organizing and increasing the efficiency with which evidence-based practices are selected, organized, integrated, implemented, and adapted.

In Wisconsin's vision for E-MLSS, the three essential elements of high-quality instruction, balanced assessment, and collaboration systematically interact within a multi-level system of support to provide the structures to increase success for all students. Culturally-responsive practices are central to an effective E-MLSS system and are evident within each of the three essential elements. In a Multi-level System of Support, schools employ the three essential

elements of E-MLSS at varying levels of intensity based upon student responsiveness to instruction and intervention. These elements do not work in isolation. Rather, all components of the visual model inform and are impacted by the others. Taken together, this relationship forms Wisconsin's vision for E-MLSS.

Leadership Team Coaching

CESA 2 staff have extensive experience and expertise for supporting district and school administrators to develop and support effective leadership teams at the district and school levels. Leadership team coaches from CESA 2 will support your district or school through stages to create and sustain an effective leadership team by establishing structure, defining roles, developing action, and more.

Professional Networks

Systems for Inclusive Learning offers year-long memberships designed to connect professionals from across districts to network, share resources, and deepen learning around hot topics and new trends in the field. These virtual gatherings last one to two hours and include both information sharing and collegial discourse. Check the CESA 2 professional development website to register for one of the following:

- Director of Instruction Network
- Principal and EE Network

Title I Statewide Network

The Title I Network is a collaborative effort with the CESAs that provides increased technical assistance and professional development for districts and schools with Title I programs. With financial support from DPI, each CESA provides free or reduced cost Title I services for all school districts in their CESA.

Universal Design for Learning

CESA 2 offers districts custom professional learning to grow Universal Design for Learning (UDL) mindsets, practices, and implementation. The UDL framework is based on brain research to build expert learners that are purposeful, strategic, and resourceful. We use the capacity building framework to move districts to deeper levels of UDL implementation:

- **Aware:** Introduction to the UDL mindsets and framework
- **Understand:** Proactive designing with standard-based goals, predictable variabilities, and dismantling barriers for learners
- **Practice:** Implementing and coaching sessions
- **Refine:** PCL implementation, grading practices and feedback
- **Teach:** Strategic sustainability in systems and structures to support continuous UDL mindsets and practices





General & State Services

Serving Schools and Fulfilling Their Needs

CESA 2 contains a variety of services to assist districts in the region and throughout the state. Through all our partnerships with other CESAs, state organizations, and outside vendors, CESA 2 covers needs for students, families, and educators throughout the years of K-12.

Business Services Consulting & Support

With decades of business office experience, CESA 2's business services consulting and support team can meet your daily business office operational and management needs. Our staff can serve as your district's business official or assist in many other ways such as processing payroll, managing accounts payable/receivable, accounting assistance, implementing new processes, and completing special projects. We can serve your district in an interim capacity during staff transitions or in permanent leadership and support roles as well as mentoring new business managers and training business office staff to enhance and modernize your school business operations. Whether your needs are long or short-term, take advantage of CESA 2's experienced staff, and let's work together to design a custom solution that best meets your district's needs.

Communication & Media Solutions

Videography Services: Capture Moments, Tell Stories

Immerse your school community in a visual journey with our professional videography services. From district highlights to compelling promotional videos, our team crafts visuals that resonate and leave a lasting impact.

Survey Assistance: Engage Stakeholders

Understanding the pulse of your school district is crucial. Our survey experts assist in designing, implementing, and analyzing surveys tailored to your needs. Empower your decision-making with valuable insights from parents, students, and staff.

Graphic Design: Look Amazing

First impressions matter. That's why all your printed and online media needs to be high quality and easy to understand. Stand out with flyers, pamphlets, business cards, branding elements, and anything else your school needs.

View our portfolio at cesa2.org/services/communications-media-services.cfm. Contact communications@cesa2.org to inquire about services!

Dialogue with Attorney Program

The Dialogue with Attorney program is intended to address general procedural compliance questions regarding special education law (IDEA). Typical questions and topics include IEP content requirements, IEP meeting requirements, student discipline procedures, least restrictive environments, evaluation procedures, student transfers, etc. The program does not include specific legal guidance on individual student/family cases, the development or review of policies, letters, or review of school district documents. The attorneys in the program will advise participants



when the request may be outside the program and when they will not be able to conduct additional follow-up research on your question as part of the DWA program.

CESA 2 has made arrangements with these key Wisconsin law firms with school law practices in special education to provide support to special education directors:

- Renning, Lewis, and Lacy, LLC
- Buelow, Vetter, Buikema, Olson & Vliet, LLC

Program Benefits:

- Immediate access to attorneys to answer general legal questions
- 30 minute time limit per call or question
- Cost-effective way for districts to obtain general legal guidance
- Timely expert advice protects against costly or labor-intensive mistakes leading to DPI complaints or Due Process proceedings

Driver Education

Driver Education (DE) is a foundational offering of CESA 2. This program allows districts to offer DE to their high school students without incurring operational, vehicle, staff, and liability costs. Our program uses the American Automobile Association's (AAA) How to Drive (15th ed.) textbook, which meets all requirements of

Wisconsin DPI, WI DOT for Driver Education, and was adopted by ADTSEA in 2020 as the national organization's curriculum. The program is 100% funded by student fees. There are three ways we offer instruction:

Traditional Classroom

Driver Education is taught in the local high schools of the CESA 2 partner districts. CESA 2 instructors are certified educators through WI-DPI, an important distinction when compared to commercial driving schools. School year courses are 17- two hour sessions; summer sessions are typically 30 hours (2 hour sessions). Behind-the-wheel (BTW) driving is conducted locally with CESA 2 instructors providing instruction.

Virtual Classroom (synchronous only)

Driver Education is taught virtually for students from our CESA 2 partner districts. CESA 2 instructors are certified driver education educators through WI DPI, an important distinction when compared to commercial driving schools. Sessions are 17- two hour sessions and are highly interactive even though the sessions are virtual. Behind-the-wheel (BTW) driving is conducted locally with CESA 2 instructors providing instruction.



Online Course

CESA 2 offers an online, asynchronous option for completing the classroom phase of driver education. The online course, along with a high school program, offers students a chance to attend the course based on their schedule. It fulfills the online learning standards set by iNACOL, an international association that specializes in competency-based online learning. Compared to most other courses that use software grading only, our DE teachers manually grade assignments and involve themselves in the students' learning and growth. Behind-the-wheel (BTW) driving instruction for online students is offered in districts as per individual districts.

Additionally, if your district only has needs for learners to have an online DE course option, we work with districts throughout the state to provide our online course to their students. The course is fully recognized by DPI and the DMV, so learners may take the BTW portion with a local driving school if we do not offer BTW lessons in your district.

Google Apps for Education

This statewide service is made available to all Wisconsin school districts through the CESA Statewide Network in partnership with DPI. Google Apps for Education allows schools to give Google's

communication and collaboration applications (e.g. Gmail, Calendar, etc.) to their education community for free.

DPI has partnered with Wisconsin's CESAs to offer professional development and technical deployment assistance training. Through a statewide agreement, districts have greater access to Google Apps for Education. All Wisconsin public, PK-12 schools and related public agencies are covered under the statewide agreement.

Human Resources Network

Network with other HR professionals and discuss current topics. For anyone with HR duties, these networking events will answer questions and provide support for whatever needs you have.

IT Support and Consulting Services

Does your district need IT support? CESA 2 offers a variety of services to solve your technological needs and problems. With over 30 years of experience working in the IT sector, CESA 2 will coordinate solutions that work for districts of all sizes. You can schedule a consultation today for a comprehensive assessment of your current technology footprint and discuss your district's goals.

Some services include:

- Managed Service Implementation
- Server Room & Cabling Management
- Managed and Endpoint Detection & Response (MDR & EDR)
- Proactive Monitoring & Maintenance
- Backup & Disaster Recovery
- Physical Security & Access
- And More!

JEDI Virtual School

Expand your course offerings with Jefferson Eastern Dane Interactive (JEDI) Virtual School. The JEDI network has grown to be a consortium of 14 school districts in Wisconsin that originally formed in 1995. Over the years, JEDI Virtual School has developed into a virtual school that continually evolves to meet consortium district needs. JEDI provides learners with a comprehensive, standards-based, asynchronous virtual curriculum for both full and part-time students. JEDI helps districts retain students by expanding the learning options available within their district.

Jefferson and Western Kenosha County Head Start

Head Start programs prepare America's most vulnerable young children to succeed in school and in life beyond school. Our mission is to deliver services to our at-risk families by partnering with community organizations, removing barriers to success, and cultivating children's social, physical, emotional, and cognitive development. This ensures that children have the abilities necessary to succeed in school and life.

The Jefferson and Western Kenosha County Head Start program provides comprehensive preschool services to 195 children ages 3-5 living in Jefferson County and Western Kenosha County. The mission of the Head Start program is to nurture and promote the individual growth and development of each child, with respect to the diversity of each child's family.

The CESA 2 Head Start staff is committed to providing services and partnering with families to support both school and home in the core areas of early learning, health, and family well-being, while engaging parents as partners every step of the way.

Professional Resource Center

The Professional Resource Center (PRC) is an instructional materials library for both special and regular education classrooms to use to support students. School districts can get the most out of their ever-tightening budget by being a member of the PRC.

Available items include books, learning assessments, classroom kits, zSpace, and so much more. This service includes a virtual district visit and consultation and CESA 2 van delivery service. The Assistive Technology (AT) section provides districts with access to technology, tools. Districts can save time and money by borrowing devices, switches, and from the AT Library. Resources are delivered and returns picked up once a week at the drop-off/pick-up site (determined by the district administrator).

The ATLC is a statewide lending library that is also available at CESA 2. This DPI funded program is housed within the CESA 2 PRC. We provide district staff the ability to trial high end devices (over \$4,000) on behalf of a student. After a trial period, the district can then purchase whichever device that is best-suited for the student. This is a free program to all schools in Wisconsin. An IEP is required for the student trial. Contact us at wisconsinAT4all.com or rachel.holt@cesa2.org to set up an account.



Check out the PRC & ATLC!

Make the most out of your budget with the Professional Resource Center (PRC)! The PRC is an instructional materials library for both special and regular education classrooms to use to support students.

Also, be sure to check out the Assistive Technology Lending Center (ATLC) which is a lending library of high-end Alternative and Augmentative Communication (AAC) equipment for trial purposes.



AT Resources

Learning Assessments

Reading and Math Intervention Kits



If you are interested in a membership, please email Rachel at rachel.hotl@cesa2.org.





Regional Spelling Bees

Every year, CESA 2 holds regional spelling bees, in conjunction with the Wisconsin State Journal and other CESAs, to determine the Wisconsin representatives for the Scripps national spelling competition. Schools in the CESA 2 area with any grade level between grades 3-8 are eligible to participate in a regional bee. Schools only need to hold a local or district spelling bee to determine their participant(s) to send to the CESA 2 regional bee. Registration begins each year in October or November, with the regional bees taking place in January or February. Check the CESA 2 website for more information and how to register.

Vocational Opportunities and Assistance (VOA)

CESA 2 VOA is a community-based transitional employment and placement program designed for individuals with a disability. VOA has been successfully operating since 1982, providing a wide range of employment assistance to those individuals with multiple barriers to employment. Our agency has placed over a thousand individuals in successful careers over the past 20 years by creating successful community and employer resources.

The mission of CESA 2 VOA is to promote the independence, self-sufficiency, and productivity of individuals with disabilities. VOA facilitates informed decision-making, goal-setting, personal empowerment, and community integration, while protecting and promoting the dignity and rights of the individuals served.

Wisconsin Safe and Healthy Schools Center (WISH Center)

The Wisconsin Safe and Healthy Schools (WISH Center) Training and Technical Assistance Center grows the capacity of educators to positively impact the well-being and equitable outcomes of every student. The vision of the WISH center is: "Every Child Safe, Healthy and Connected." Visit wisheschools.org for more information.

Offerings include:

- Training and technical assistance for public schools in Wisconsin around: Restorative Practices, Mental Health, Youth Mental Health First Aid, ATODA, Compassion Resilience, School Safety, Bullying Prevention, Suicide Prevention, SEL, SBIRT (Screening, Brief Intervention and Referral to Treatment), Vaping Prevention.
- Professional learning is provided online, through blended education or in face-to-face settings.
- Provide follow-up technical assistance to participants in professional learning events in order to support implementation
- Web page and e-newsletter with access to the most recent data, information, practices and programs

The Wisconsin Safe & Healthy Schools Center is a collaborative project between DPI and the CESA Statewide Network (CSN).



Innovative Thinking. Tailored Delivery.

1221 Innovation Drive, Suite 205
Whitewater, WI 53190
262.473.1473
www.cesa2.org